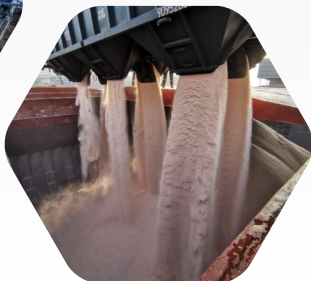




# FERTILIZERS

AMSPEC'S EXPERTISE ENSURES THE QUALITY AND SAFETY OF FERTILIZERS, AND ULTIMATELY, PROMOTES HEALTHY CROPS AND A SUSTAINABLE AGRICULTURAL INDUSTRY



---

YOUR PRODUCT, OUR EXPERTISE



## YOUR PRODUCT, OUR EXPERTISE

The AmSpec Group has been relied upon in the testing, inspection, and certification (TIC) sector for several decades. As a trusted service provider, AmSpec continues to supply independent, accurate analysis and inspection on various commodities.

With our ever growing global footprint supported by our empowered professional team, along with industry and regulatory accredited facilities, we continue to uphold our high standards, highly exceed client expectations, and maintain our commitment to the longevity and sustainability of our planet.

Focused on your supply chain, no matter the geography, commodity or market, AmSpec are supporting the reliable and seamless transaction of bulk and container shipments. When it comes to logistics, quality control, and contract specifications, put your trust in the AmSpec Fertilizers division. We are capable of assisting you in daily operational challenges, with the added benefit of industry-specific knowledge and experience.



### AMSPEC'S ULTIMATE PURPOSE IS TO ENSURE THAT YOUR PRODUCTS ARE SAFE, EFFECTIVE, AND MEET REGULATORY REQUIREMENTS.



#### TESTING & INSPECTION SOLUTIONS

- Pre-shipment assessment and verification of product at origin, including compliance with shipping marks and tally specifications.
  - Sampling of export cargo loading into bulk vessels and shipping containers to verify condition of goods.
  - Verification of weight via shore scale, weighbridge or evaluation by independent calculation.
  - Marine related survey including hold cleanliness and on-hire & off-hire surveys.
  - Vessel loading and discharge supervisions.
  - Storage management, inventory control and stock monitoring.
- AmSpec provides a wide range of reliable and timely analytical services.
  - Our highly-trained and experienced lab staff and state of the art laboratories ensure that the analyses are performed with the highest level of quality, accuracy and precision.
  - AmSpec laboratories are located in close proximity to main work sites, minimizing turnaround time and allowing competitive services without compromise.
  - Our laboratories follow the normative requirements for ISO 17025:2017. Accredited laboratories and their scope of accreditation are available on the websites of the corresponding accreditation bodies.

#### CERTIFICATION SOLUTIONS

AmSpec's trade services are focused on the timely and accurate production of trade related documentation and ensure certificates are issued considering Client's requirements.

#### RISK MANAGEMENT

Go one step ahead to protect your trade with AmSpec Full Outturn Guarantee/ risks solutions: Reports issued upon Loading and discharge supervisions performed by AmSpec Group, will be the basis of the settlement for the differences in weight ascertained between loading and discharge, with or without franchise and attributable to normal trade loss and/or accuracy of weighing, gauging and measuring. Experience AmSpec care and support services with our Stock checks, Stock monitoring tailor made solutions.

STILL HAVE MORE QUESTIONS ?  
CONTACT US NOW  
[agri.services@amspecgroup.com](mailto:agri.services@amspecgroup.com)  
[www.amspecgroup.com](http://www.amspecgroup.com)

FOLLOW AMSPEC AGRICULTURE ON LINKEDIN

